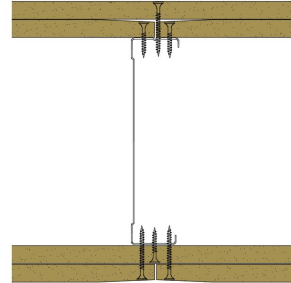


146-S-57 - SPEEDLINE System Data Sheet - Version V1 (24-10-23)

SPEEDLINE 146mm 'C' Stud Partition @600mm
Ctrs, with 2x Siniat GTEC 12.5mm Standard Board
each side



System Performance Breakdown

Fire Resistance:

BS476 Part 22:1987:

Test Ref & Date or Applied Ref & Report:

Max Height:

Thickness:

Duty Grade: BS 5234: Part 2:1992:

Sound Insulation:

60/60 Minutes (Integrity/Insulation).

BRE 277436C - BRE Report P102396-1011C

Refer to Speedline Specification Clause

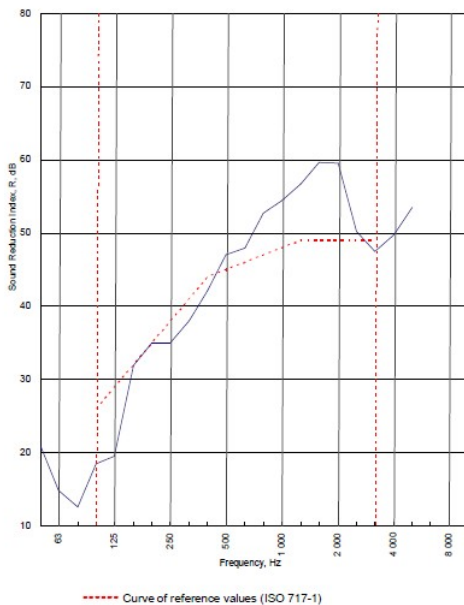
198 mm. (At Base Track, Excluding Finishes)

Severe - Annexes A-F

45 R_w dB, Date Tested or Assessed Against - 70-S-57

Test Code:
H17533AA
Test Date:
12/08/2011

Freq. Hz	R dB
50	21.0
63	14.9
80	12.6
100	18.5
125	19.5
160	31.9
200	35.0
250	35.0
315	38.1
400	42.1
500	47.0
630	48.0
800	52.7
1 000	54.5
1 250	56.7
1 600	59.7
2 000	59.5
2 500	50.2
3 150	47.5
4 000	49.8
5 000	53.5
6 300	
8 000	
10 000	



Rating according to BS EN ISO 717-1:1997	R_w (C;Ctr) = 45 (-3;-10) dB		
Evaluation based on laboratory measurement results obtained by an engineering method:	Max dev. 9.5 dB at 125 Hz		
	C_{50-150} = -5 dB	C_{50-500} = -4 dB	$C_{100-5000}$ = -2 dB
	$C_{2,50-3,150}$ = -15 dB	$C_{2,50-5,000}$ = -15 dB	$C_{0,100-5000}$ = -10 dB

TESTED AT ONE OF THE UKAS ACCREDITED LABORATORIES BELOW

B.T.C (H-Ref on Graph) 

B.R.E 

AIRO 

S.R.L 

Customer: Metsec plc Hepsec Division

BTC 17533A: Page 8 of 10

